



Welcome to Middle School



Creating a smooth transition for your student



www.pusd.us/family



[www.instagram/pusd_familycommunityoffice](https://www.instagram.com/pusd_familycommunityoffice)



Agenda

Transition
Phase

Middle School
Options &
Academics

Beyond the
Classroom

College
Access Plan

Q&A
PEN
Ambassadors



Transition Phase



Spring 2024
(5th grade)

- State Exam Results
 - Honors classes
 - Math academy
- Transitional IEP's range between January & May
- School tours
 - www.pusd.us/tours



Summer Packet

- Bell schedule
- Emergency card
- 6th grade day information
- Immunizations needed
- Uniform policy

6th Grade Day
(August 2024)

- Class schedule
- Meet counselor
- Receive books
- Locker (if applicable)
- LEARNs
- Browse the campus



Logistical Concerns:

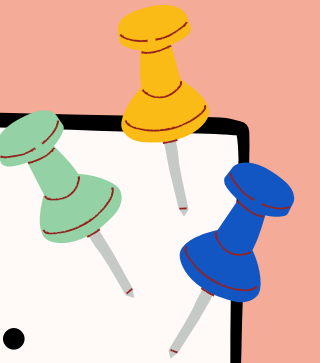
1. Will I be able to find my classrooms?
2. Where do I eat lunch?
3. Where are the bathrooms?
4. What happens if I get lost?



Students are in a bigger school, more transitions, multiple teachers and more materials.

How to support:

1. Explore your school prior to starting.
2. Map out your students schedule & locate classrooms.
3. Go over bell schedule
4. Talk about PE procedures and expectations.





Social Fears:

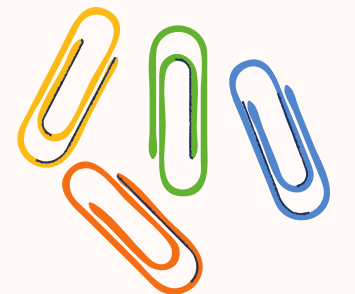
1. Will I be able to find my classrooms?
2. Where do I eat lunch?
3. Where are the bathrooms?
4. What happens if I get lost?



Social interactions are crucial during the middle school years because children are developmentally pulling away from parents and relying more on their peers.

How to support:

1. Encourage your student to set a location to meet their friends at the start of school, nutrition and lunch.
2. Encourage them to get involved in school activities.
3. Arrange for social time with peers after school.





Academic Concerns:

1. Will the teachers be hard graders?
2. Will there be a lot of homework?
3. Can I do the work?

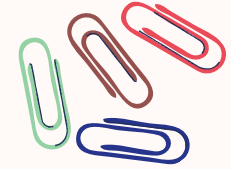


The academic material is more difficult and teacher expectations rise. Grades don't come as easily as they may have in elementary school.

How to support:

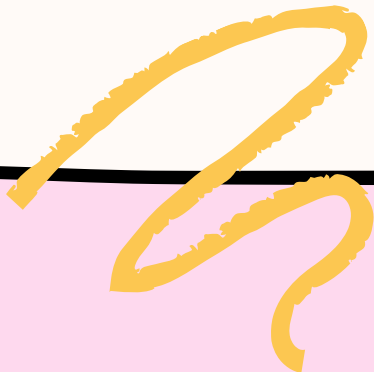
1. Help them with time management.
2. Schedule homework time
3. Work on an organizational system (agenda, planners, notebooks, etc).
4. Monitor assignments and grades on Parent Portal.
5. Teach and encourage them to be advocates for themselves.

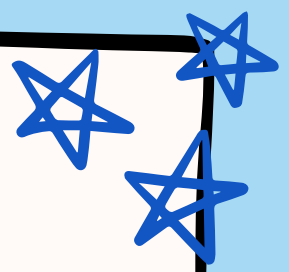
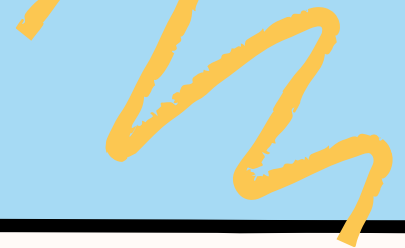




Middle School Options

OEB	Eliot	Blair	McKinley	Marshall	Sierra Madre
Special Programs Available					
Spanish Dual Language	French Dual Language	Middle Years International Baccalaureate (IB)	Arts Program	Academy for Creative Industries	Mandarin Dual Language
Math Academy	Conservatory	Spanish Dual Language	Summit Learning		Math Academy
AVID	Arts Integration	Armenian Academy	Math Academy		





Schedule Overview



ELA

MATH

SCIENCE

PE

History*



***6th grade- Ancient Civilization
7th grade- Early & Modern Times
8th grade- US History**





Elective Selection



OEB	McKinley	SMMS	Eliot	Blair	Marshall
<ul style="list-style-type: none">• Art• Orchestra/Band• Musical Theatre• Coding• Avid	<ul style="list-style-type: none">• Music• Art• Yearbook• Drama• ASB• Choir?• Dance• Drumming	<ul style="list-style-type: none">• Computer• Art• Musical Theatre• Band	<ul style="list-style-type: none">• Dance• Costume Design• Rock Band• Chorus• Drama• French• World Culture	<ul style="list-style-type: none">• Dance• Orchestra• World Language• Chorus• Music Tech• Drama• Art	<ul style="list-style-type: none">• Art• ASB• Band• Choir• Drama• Orchestra• PE Dance• Intro to Spanish



Grades

- Assignments and grades can be found on Parent Portal
- The school year is broken down into two semesters
 - 1st semester: August-December
 - 2nd semester: January- June
- Progress reports 4-5 weeks (Parent Portal)
- Final grades are posted at the end of each semester. These are their permanent grades, that go on the students records




Bell Schedule

1. How long do they get between classes?
2. What is "Nutrition"?
3. How long is "Lunch"?
4. Early Release on Mondays?



Attendance



"Tardy" defined as not in the classroom when the tardy bell rings

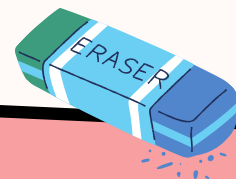
After 20+ minutes, a "tardy" changes to "late"

If a student is not in class, they will be marked absent; even if they are on campus

*Students can be designated "truant" based on **full day absences, class absences & being tardy**

A green chalkboard with an orange border. At the bottom of the board, there are illustrations of a yellow eraser, a blue eraser, and a purple eraser. The text is written in white on the board.

*This will prompt Truancy letters to be mailed out





It's a team effort....



PARENT	STUDENT	COUNSELOR
Support and encourage your student	Learning to set goals and understand what is required to meet them	Schedule students in classes
Ask questions/be curious	Taking advantage of opportunities to explore possible future paths	Conduct Student Success Team (SST) Meeting
Provide a safe space; learn what supports are available	Learning to articulate what they need to thrive	Social/Emotional Support
Check Parent Portal for grades and attendance and make sure your contact information is correct	Checking & reading their email (and other communications)	Peer Mediation
Encourage your student to try new things and lean into their areas of interest/strength	Seeking out opportunities & trying new things	Monitor student's academic success
If your child is having academic difficulties, contact their counselor to develop an action plan	Learning to self-advocate	Career/College counseling

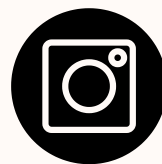


Q&A

Pasadena Education
Network (PEN).
Ambassadors



Got a minute?
 Let us know if this was
 helpful to you



**Family & Community
 Engagement Office**

RM. 121

Nancy Molina

Assistant Coordinator, Community Outreach
lagunamolina.nancy@pusd.us

Jasmine Harris

Community Liaison, Family & Community
 Engagement
harris.jasmine@pusd.us



FAMILY & COMMUNITY
 ENGAGEMENT
 PASADENA UNIFIED SCHOOL DISTRICT